

# 11b/g Wireless Client Bridge/AP



## User's Manual

*Version: 2.1*

## Table of Contents

---

<b>1</b>	<b>INTRODUCTION</b> .....	<b>5</b>
1.1	FEATURES & BENEFITS .....	5
1.2	PACKAGE CONTENTS .....	6
1.3	UNIT DESCRIPTION .....	6
1.4	SYSTEM REQUIREMENTS .....	6
1.5	APPLICATIONS .....	7
1.6	NETWORK CONFIGURATION .....	7
<b>2</b>	<b>UNDERSTANDING THE HARDWARE</b> .....	<b>10</b>
2.1	HARDWARE INSTALLATION .....	10
2.2	IP ADDRESS CONFIGURATION .....	10
<b>3</b>	<b>SWITCH BETWEEN BRIDGE/BRIDGE ROUTER/ AP</b> .....	<b>12</b>
3.1	BRIDGE/BRIDGE ROUTER TO ACCESS POINT .....	12
3.2	ACCESS POINT TO BRIDGE/BRIDGE ROUTER .....	12
<b>4</b>	<b>BRIDGE/BRIDGE ROUTER MODE – WEB CONFIGURATION</b> .....	<b>14</b>
3.3	LOGGING IN.....	14
3.4	MANAGEMENT .....	16
3.4.1	OPERATION MODE .....	16
3.4.2	STATUS .....	17
3.4.3	STATISTICS .....	18
3.4.4	LOG .....	19
3.4.5	UPGRADE FIRMWARE .....	19
3.4.6	SAVE / RELOAD SETTINGS, RESET TO DEFAULT .....	20
3.4.7	PASSWORD .....	21
3.5	TCP/IP SETTINGS .....	21
3.5.1	LAN INTERFACE .....	21
4.3.2	SNMP SETTINGS.....	22
3.6	WIRELESS.....	23
3.6.1	BASIC SETTINGS (INFRASTRUCTURE, ADHOC).....	23
3.6.2	ADVANCED SETTINGS.....	24
3.6.3	SECURITY .....	26
3.6.3.1	ENCRYPTION DISABLED .....	26
3.6.3.2	WEP 64-BIT / 128-BIT.....	27
3.6.3.3	WPA / WPA2 PASSPHRASE .....	28
3.6.3.4	WPA / WPA2 RADIUS AUTHENTICATION .....	29
3.6.4	SITE SURVEY .....	30
<b>5</b>	<b>ACCESS POINT MODE – WEB CONFIGURATION</b> .....	<b>31</b>
3.7	LOGGING IN.....	31
3.8	MANAGEMENT .....	33
3.8.1	OPERATION MODE .....	33
3.8.2	STATUS .....	34
3.8.3	STATISTICS .....	35
3.8.4	LOG .....	35
3.8.5	UPGRADE FIRMWARE .....	36
3.8.6	SAVE / RELOAD SETTINGS, RESET TO DEFAULT .....	36
3.8.7	PASSWORD .....	37
3.9	TCP/IP SETTINGS .....	38
3.9.1	LAN INTERFACE .....	38
3.9.1.1	STATIC IP ADDRESS.....	38
3.9.1.2	DHCP CLIENT.....	39
3.9.1.3	DHCP SERVER .....	40
3.9.2	SNMP SETTINGS .....	41
3.10	WIRELESS.....	41
3.10.1	BASIC SETTINGS.....	42

---

3.10.2	ADVANCED SETTINGS.....	43
3.10.3	SECURITY .....	45
3.10.3.1	ENCRYPTION DISABLED .....	45
3.10.3.2	WEP 64-BIT / 128-BIT.....	46
3.10.3.3	WPA / WPA2 / WPA2 MIXED PASSPHRASE .....	47
3.10.3.4	WPA / WPA2 / WPA2 MIXED RADIUS AUTHENTICATION .....	48
3.10.4	ACCESS CONTROL .....	49
3.10.5	WDS.....	50
<b>APPENDIX A – SPECIFICATIONS.....</b>		<b>52</b>
<b>APPENDIX B – FCC INTERFERENCE STATEMENT.....</b>		<b>53</b>
<b>APPENDIX C – IC STATEMENT .....</b>		<b>54</b>

## Revision History

---

<b>Version</b>	<b>Date</b>	<b>Notes</b>
1.36	April 26, 2006	
2.00	January 24, 2007	PM Editing
2.1	June 19, 2007	

# 1 Introduction

The Wireless Bridge/Client Router/AP/Repeater device operates seamlessly in the 2.4 GHz frequency spectrum supporting the 802.11b (2.4GHz, 11Mbps) and faster 802.11g (2.4GHz, 54Mbps) wireless standards. It's the best way to add wireless capability to your existing wired network, or to add bandwidth to your wireless installation.

ECB-3220 has high transmitted output power and high receivable sensitivity. High output power and high sensitivity can extend range and coverage to reduce the roaming between APs to get more stability wireless connection. It also can reduce the expense of equipment in the same environment.

To protect your wireless connectivity, it can encrypt all wireless transmissions through 64/128-bit WEP data encryption and also supports WPA/WPA2. The MAC address filter lets you select exactly which stations should have access to your network. User isolation function can protect the private network between client users.

This chapter describes the features & benefits, package contents, applications, and network configuration.

## 1.1 Features & Benefits

Features	Benefits
High Speed Data Rate Up to 54Mbps	Capable of handling heavy data payloads such as MPEG video streaming
High Output Power up to 26 dBm	Excellent output power spreads the operation distance
IEEE 802.11b/g Compliant	Fully Interoperable with IEEE 802.11b/IEEE802.11g compliant devices
SNMP Remote Configuration Management	Help administrators to remotely configure or manage the Access Point easily.
Point-to-point, Point-to-multipoint Wireless Connectivity	Let users transfer data between two buildings or multiple buildings
WPA2/WPA/ IEEE 802.1x support	Powerful data security
Hide SSID (AP Mode)	Avoids unallowable users sharing bandwidth, increases efficiency of the network
DHCP Client/ Server	Simplifies network administration
WDS (Wireless Distributed System)	Make wireless AP and Bridge mode simultaneously as a wireless repeater
Universal Repeater	The easiest way to expand your wireless network's coverage
MAC address filtering (AP mode)	Ensures secure network connection

User isolation support (AP mode)	Protect the private network between client users.
PPPoE function support (CR mode)	Easy to access internet via ISP service authentication
Power-over-Ethernet (IEEE802.3af)	Flexible Access Point locations and cost savings
Keep personal setting	Keep the latest setting when firmware upgrade

## 1.2 Package Contents

Open the package carefully, and make sure that none of the items listed below are missing. Do not discard the packing materials, in case of return; the unit must be shipped in its original package.

- One Wireless Client Bridge Unit
- One Switching Power Adapter (12V/ 1.25A)
- One CAT5 UTP Cable
- One CD-ROM with User's Manual

## 1.3 Unit Description



## 1.4 System Requirements

The following are the minimum system requirements in order to configure the device.

- PC/AT compatible computer with a Ethernet interface.
- Operating system that supports HTTP web-browser

## 1.5 Applications

The wireless LAN products are easy to install and highly efficient. The following list describes some of the many applications made possible through the power and flexibility of wireless LANs:

- a) **Difficult-to-wire environments**  
There are many situations where wires cannot be laid easily. Historic buildings, older buildings, open areas and across busy streets make the installation of LANs either impossible or very expensive.
- b) **Temporary workgroups**  
Consider situations in parks, athletic arenas, exhibition centers, disaster-recovery, temporary offices and construction sites where one wants a temporary WLAN established and removed.
- c) **The ability to access real-time information**  
Doctors/nurses, point-of-sale employees, and warehouse workers can access real-time information while dealing with patients, serving customers and processing information.
- d) **Frequently changed environments**  
Show rooms, meeting rooms, retail stores, and manufacturing sites where frequently rearrange the workplace.
- e) **Small Office and Home Office (SOHO) networks**  
SOHO users need a cost-effective, easy and quick installation of a small network.
- f) **Wireless extensions to Ethernet networks**  
Network managers in dynamic environments can minimize the overhead caused by moves, extensions to networks, and other changes with wireless LANs.
- g) **Wired LAN backup**  
Network managers implement wireless LANs to provide backup for mission-critical applications running on wired networks.
- h) **Training/Educational facilities**  
Training sites at corporations and students at universities use wireless connectivity to ease access to information, information exchanges, and learning.

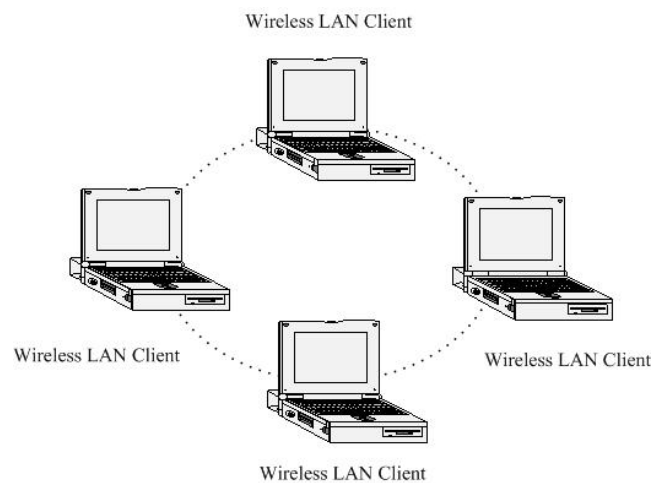
## 1.6 Network Configuration

To better understand how the wireless LAN products work together to create a wireless network, it might be helpful to depict a few of the possible wireless LAN PC card network configurations. The wireless LAN products can be configured as:

- a) Ad-hoc (or peer-to-peer) for departmental or SOHO LANs.
- b) Infrastructure for enterprise LANs.

- a) **Ad-hoc (peer-to-peer) Mode**

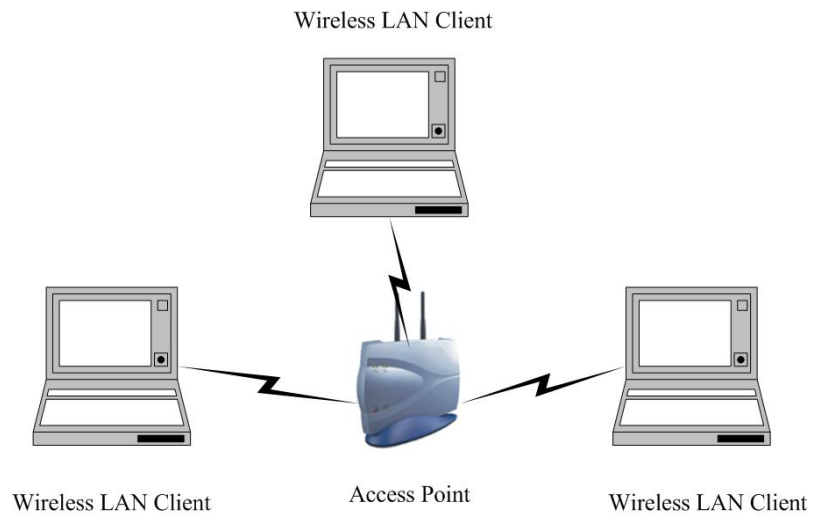
This is the simplest network configuration with several computers equipped with the PC Cards that form a wireless network whenever they are within range of one another. In ad-hoc mode, each client is peer-to-peer, would only have access to the resources of the other client and does not require an access point. This is the easiest and least expensive way for the SOHO to set up a wireless network. The image below depicts a network in ad-hoc mode.



#### **b) Infrastructure Mode**

The infrastructure mode requires the use of an access point (AP). In this mode, all wireless communication between two computers has to be via the AP. It doesn't matter if the AP is stand-alone or wired to an Ethernet network. If used in stand-alone, the AP can extend the range of independent wireless LANs by acting as a repeater, which effectively doubles the distance between wireless stations. The image below depicts a network in infrastructure mode.



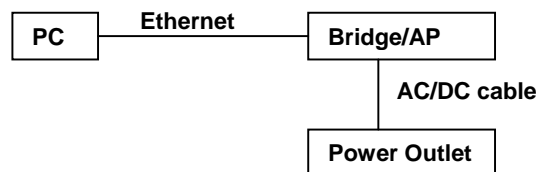


## 2 Understanding the Hardware

### 2.1 Hardware Installation

- 1 Place the unit in an appropriate place after conducting a site survey.
- 2 Plug one end of the Ethernet cable into the RJ-45 port of the device and another end into your PC/Notebook.
- 3 Insert the DC-inlet of the power adapter into the port labeled “DC-IN” and the other end into the power socket on the wall.

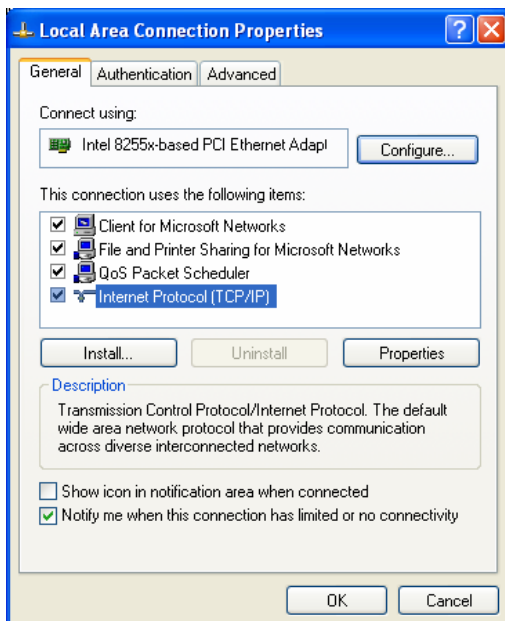
This diagram depicts the hardware configuration



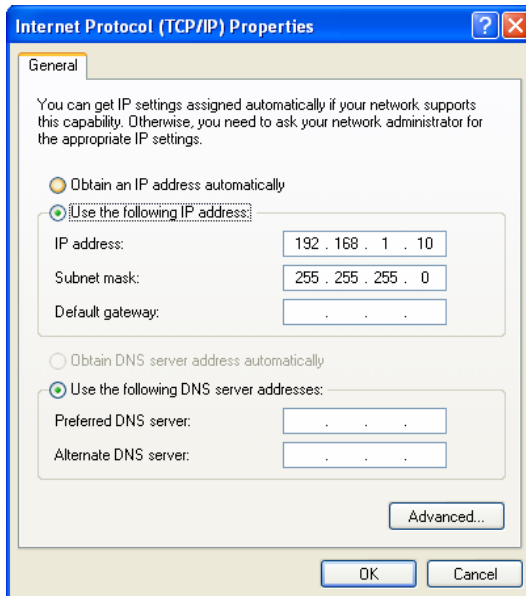
### 2.2 IP Address Configuration

This device can be configured as a Bridge or Access Point. The default IP address of the device is **192.168.1.1**. In order to log into this device, you must first configure the TCP/IP settings of your PC/Notebook.

1. In the control panel, double click Network Connections and then double click on the connection of your Network Interface Card (NIC). You will then see the following screen.



2. Select **Internet Protocol (TCP/IP)** and then click on the **Properties** button. This will allow you to configure the TCP/IP settings of your PC/Notebook.



3. Select **Use the following IP Address** radio button and then enter the IP address and subnet mask. Ensure that the IP address and subnet mask are on the same subnet as the device.  
For Example:           Device IP address: 192.168.1.1  
                              PC IP address: 192.168.1.10  
                              PC subnet mask: 255.255.255.0
4. Click on the **OK** button to close this window, and once again to close LAN properties window.

## 3 Switch between Bridge/Bridge Router/AP

---

This device can be configured as a Bridge or Access Point. The default IP address of the device is **192.168.1.1** in Bridge mode. This chapter will describe the steps to switch from Bridge to Access Point and Access Point to Bridge.

### 3.1 Bridge/Bridge Router to Access Point

- 1 Enter the default IP address (192.168.1.1) of the bridge into the address bar of the web-browser.
- 2 By default, a user name and password has not been configured. If you have configured a user name and password, please enter them into the field to continue
- 3 Once you have logged in, click on the **Operation Mode** link under the **Management** menu.

#### Operation Mode

You can setup different modes to LAN and WLAN interface for NAT and bridging function.

- |   |   |
|---|---|
| <input checked="" type="radio"/> <b>Bridge:</b> | Client Bridge provides connectivity between two wired LAN segments, and is used in point-to-point or point-to-multipoint configurations.  |
| <input type="radio"/> <b>Bridge Router:</b>     | Client Router designed to connect a small number of wireless nodes to a single device for LAN and WLAN connectivity to another network.   |
| <input type="radio"/> <b>AP:</b>                | Access Point is probably the most common wireless LAN device with which you will work as a wireless LAN administrator. Access point provides clients with a point of access into a network. |

Apply Change

Reset

- 4 Since this device is currently in Bridge mode, the **Bridge** radio button will be selected by default.
- 5 Select the **AP** radio button to and then click on the **Apply Change** to switch the operation mode to Access Point.
- 6 Wait for about 1 minute and the device will automatically restart into Access Point mode.

### 3.2 Access Point to Bridge/Bridge Router

- 1 Enter the default IP address (192.168.1.2) of the bridge into the address bar of the web-browser.

- 2 By default, a user name and password has not been configured. If you have configured a user name and password, please enter them into the field to continue
- 3 Once you have logged in, click on the **Operation Mode** link under the **Management** menu.

## Operation Mode

You can setup different modes to LAN and WLAN interface for NAT and bridging function.

- |   |   |
|---|---|
| <input type="radio"/> <b>Bridge:</b>        | Client Bridge provides connectivity between two wired LAN segments, and is used in point-to-point or point-to-multipoint configurations.  |
| <input type="radio"/> <b>Bridge Router:</b> | Client Router designed to connect a small number of wireless nodes to a single device for LAN and WLAN connectivity to another network.   |
| <input checked="" type="radio"/> <b>AP:</b> | Access Point is probably the most common wireless LAN device with which you will work as a wireless LAN administrator. Access point provides clients with a point of access into a network. |

Apply Change

Reset

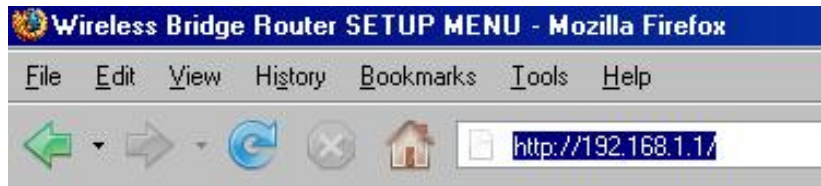
- 4 Since this device is currently in Access Point mode, the **AP** radio button will be selected by default.
- 5 Select the **Bridge or Bridge Router** radio button to and then click on the **Apply Change** to switch the operation mode to Bridge.
- 6 Wait for about 1 minute and the device will automatically restart into Bridge mode.

## 4 Bridge/Bridge Router Mode – Web Configuration

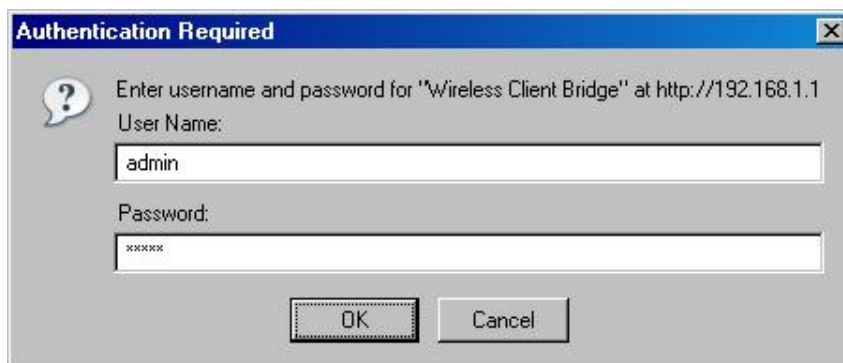
---

### 3.3 Logging In

- To configure the Bridge through the web-browser, enter the IP address of the Bridge (default: **192.168.1.1**) into the address bar of the web-browser and press **Enter**.



- Make sure that the Bridge and your computers are on the same subnet. Refer to **Chapter 2** in order to configure the IP address of your computer.
- Username : **admin**; Password : **admin**



- After logging in you will graphical user interface (GUI) of the bridge. The navigation drop-down menu on left is divided into three main sections:
  1. **Management**: This includes operation mode, status, statistics, logs, upgrade firmware, save/reload settings, and password.
  2. **TCP/IP Settings**: This includes the configuration of the LAN port and settings for the LAN IP, subnet mask, DHCP client, spanning tree and MAC cloning.
  3. **Wireless**: This includes the basic, advanced, security and site-survey settings for the wireless interface.
- The Bridge status page is also displayed once you have logged in. This includes details about the system, wireless, and TCP/IP configuration.

## Client Bridge Status

This page shows the current status and some basic settings of the device.

System	
Uptime	0day:0h:17m:37s
Firmware Version	v1.39.06
Wireless Configuration	
Mode	Infrastructure Client Bridge
Band	2.4 GHz (B+G)
SSID	wireless_g
Channel Number	5
Encryption	Disabled
BSSID	00:00:00:00:00:00
State	Scanning
Signal Strength	0.00
Noise Level	0.00
TCP/IP Configuration	
Attain IP Protocol	Fixed IP
IP Address	192.168.1.1
Subnet Mask	255.255.255.0
Default Gateway	0.0.0.0
DHCP	Disabled
MAC Address	00:02:6f:49:1b:d6

- **System**
  - **Uptime:** Duration of time since the device was last reset.
  - **Firmware version:** Version of the firmware that is currently loaded on the device.
- **Wireless Configuration:**
  - **Mode:** Wireless configuration mode such as client bridge, AP, or WDS.
  - **Band:** Frequency and IEEE 802.11 operation mode (b-only, g-only, or b+g).
  - **SSID:** The name used to identify the wireless network.
  - **Channel Number:** The channel used to communicate on the wireless network.
  - **Encryption:** The type of security used on this network. It may be disabled, WEP, WPA, etc.
  - **BSSID:** The MAC address of the SSID.
  - **State:** The current state of the bridge. It may be scanning or associated or disabled.
  - **Signal Strength:** The signal strength of the wireless device.
  - **Noise Level:** The level of interference.
- **TCP/IP Configuration:**
  - **Attain IP Protocol:** The IP address setting may be fixed or static.
  - **IP Address:** Displays the current IP address of the LAN port.
  - **Subnet Mask:** Displays the current subnet mask for the IP address.
  - **Default Gateway:** Displays the default gateway for the device.
  - **DHCP:** Displays the DHCP setting.
  - **MAC Address:** Displays the MAC address of the device.

## 3.4 Management



- Click on the **Management** link on the navigation drop-down menu. You will then see five options: operation mode, status, statistics, log, upgrade firmware, save/reload settings, and password. Each option is described below.

### 3.4.1 Operation Mode

- Click on the **Operation Mode** link under the **Management** menu. The **Operation Mode** allows you to switch from Client Bridge to Access Point mode.

#### Operation Mode

You can setup different modes to LAN and WLAN interface for NAT and bridging function.

- |   |   |
|---|---|
| <input type="radio"/> <b>Bridge:</b>        | Client Bridge provides connectivity between two wired LAN segments, and is used in point-to-point or point-to-multipoint configurations.  |
| <input type="radio"/> <b>Bridge Router:</b> | Client Router designed to connect a small number of wireless nodes to a single device for LAN and WLAN connectivity to another network.   |
| <input checked="" type="radio"/> <b>AP:</b> | Access Point is probably the most common wireless LAN device with which you will work as a wireless LAN administrator. Access point provides clients with a point of access into a network. |

Apply Change

Reset

- Select the **AP**, **Bridge** or **Bridge Router** and then click on the **Apply Change** button.

Apply Change

Reset

Please wait...





- Please wait and then enter the specified IP address into the web-browser. The previous settings will be retained in AP mode. .
- Refer to **Chapter 5** to learn how to configure this device in Access Point mode.

### 3.4.2 Status

- Click on the **Status** link under the **Management** menu. The **Status** page is the first page that is displayed once you have logged in. This includes details about the system, wireless, and TCP/IP configuration.

#### Client Bridge Status

This page shows the current status and some basic settings of the device.

System	
Uptime	0day:0h:17m:37s
Firmware Version	v1.39.06
Wireless Configuration	
Mode	Infrastructure Client Bridge
Band	2.4 GHz (B+G)
SSID	wireless_g
Channel Number	5
Encryption	Disabled
BSSID	00:00:00:00:00:00
State	Scanning
Signal Strength	0.00
Noise Level	0.00
TCP/IP Configuration	
Attain IP Protocol	Fixed IP
IP Address	192.168.1.1
Subnet Mask	255.255.255.0
Default Gateway	0.0.0.0
DHCP	Disabled
MAC Address	00:02:6f:49:1b:d6

- **System**
  - **Uptime:** Duration of time since the device was last reset.
  - **Firmware version:** Version of the firmware that is currently loaded on the device.
- **Wireless Configuration:**
  - **Mode:** Wireless configuration mode such as client bridge, AP, or WDS.
  - **Band:** Frequency and IEEE 802.11 operation mode (b-only, g-only, or b+g).
  - **SSID:** The name used to identify the wireless network.
  - **Channel Number:** The channel used to communicate on the wireless network.
  - **Encryption:** The type of security used on this network. It may be disabled, WEP, WPA, etc.
  - **BSSID:** The MAC address of the SSID.

- **State:** The current state of the bridge. It may be scanning or associated or disabled.
- **Signal Strength:** The signal strength of the wireless device.
- **Noise Level:** The level of interference.
- **TCP/IP Configuration:**
  - **Attain IP Protocol:** The IP address setting may be fixed or static.
  - **IP Address:** Displays the current IP address of the LAN port.
  - **Subnet Mask:** Displays the current subnet mask for the IP address.
  - **Default Gateway:** Displays the default gateway for the device.
  - **DHCP:** Displays the DHCP setting.
  - **MAC Address:** Displays the MAC address of the device.

### 3.4.3 Statistics

- Click on the **Statistics** link under the **Management** menu. This page displays the number of sent and received packets on the Ethernet and Wireless interface.

#### Statistics

This page shows the packet counters for transmission and reception regarding to wireless and Ethernet networks.

<b>Wireless LAN</b>	<i>Sent Packets</i>	56501
	<i>Received Packets</i>	30676
<b>Ethernet LAN</b>	<i>Sent Packets</i>	2232
	<i>Received Packets</i>	1742

- Since the packet counter is not dynamic, you must click on the **Refresh** button for the most recent statistics.

### 3.4.4 Log

- Click on the **Log** link under the **Management** menu. The **Log** page displays a list of events that are triggered on the Ethernet and Wireless interface. This log can be referred when an unknown error occurs on the system or when a report needs to be sent to the technical support department for debugging purposes.

#### System Log

This page can be used to set remote log server and show the system log.

**Enable Log**  
 **system all**       **wireless**  
 **Enable Remote Log**      **Log Server IP Address:**

```

Oday 00:02:20 klogd started: BusyBox v1.00-pre8 (2005.09.16-02:21+0000)
Oday 00:02:20 Linux version 2.4.18-MIPS-01.00 (root@localhost.localdomain) (gcc
version 3.3.3) #183 Mon Jan 29 09:54:07 CST 20day 00:02:20 early printk enabled
Oday 00:02:20 Determined physical RAM map:
Oday 00:02:20 memory: 01000000 @ 00000000 (usable)
Oday 00:02:20 Initial ramdisk at: 0x801c4000 (5529600 bytes)
Oday 00:02:20 On node 0 totalpages: 4096
Oday 00:02:20 zone(0): 4096 pages.
Oday 00:02:20 zone(1): 0 pages.
Oday 00:02:20 zone(2): 0 pages.
Oday 00:02:20 Kernel command line: root=/dev/ram console=0 ramdisk_start=0
single
Oday 00:02:20 Calibrating delay loop... 178.99 BogoMIPS
Oday 00:02:20 Memory: 8724k/16384k available (1639k kernel code, 7660k reserved,
5500k data, 56k init, 0k highmem)
Oday 00:02:20 Dentry-cache hash table entries: 2048 (order: 2, 16384 bytes)

```

- In order for the log to record all the events, you must first place a check in the **Enable Log** or **Enable Remote Log (Log Server required)** check box.
- Select **system all** or **wireless** depending on the type of events you want recorded.
- Since the log is not dynamic, you must click on the **Refresh** button for the most recent events, or click on the **Clear** button to clear the log.

### 3.4.5 Upgrade Firmware

- Click on the **Upgrade Firmware** link under the **Management** menu. This page is used to upgrade the firmware on the device. Make sure that downloaded the appropriate firmware from your vendor.

#### Upgrade Firmware

This page allows you upgrade the Access Point firmware to new version. Please note, do not power off the device during the upload because it may crash the system.

**Select File:**

- Click on the Browse button and then select the appropriate firmware and then click on the **Upload** button.

Note: The upgrade process may take about 1 minute to complete. Do not power off the device during this process as it may crash the device and make it unusable. The device will restart automatically once the upgrade is complete.

### 3.4.6 Save / Reload Settings, Reset to Default

- Click on the **Save / Reload Setting** link under the **Management** menu. This option is used to save the current settings of the device in a file on your local disk or load settings on to the device from a local disk. This feature is very handy for administrators who have several devices that need to be configured with the same settings.
- This page also allows you to reset the device to its factory default settings.

## Save/Reload Settings

This page allows you save current settings to a file or reload the settings from the file which was saved previously. Besides, you could reset the current configuration to factory default.

---

<b>Save Settings to File:</b>	<input type="button" value="Save..."/>
<b>Load Settings from File:</b>	<input type="text"/> <input type="button" value="Browse..."/> <input type="button" value="Upload"/>
<b>Reset Settings to Default:</b>	<input type="button" value="Reset"/>
<b>Restart the System:</b>	<input type="button" value="Restart"/>

- Click on the **Save** button to save the current settings to a file on the local disk.
- Click on the **Browse** button to select the settings file and then click on the Upload button to load the previously saved settings.
- Click on the **Reset** button to reset the device to its factory default settings. Click **Restart** to reboot the device.

### 3.4.7 Password

- Click on the **Password** link under the **Management** menu. This option allows you to create a user name and password for the device. By default, this device is configured without a user name and password. For security reasons it is highly recommended that you create a user name and password.

#### Password Setup

This page is used to set the account to access the web server of Access Point. Empty user name and password will disable the protection.

User Name:

New Password:

Confirmed Password:

- Enter a **user name** into the first field.
- Enter a password into the **New Password** field and then re-type the password into the **Confirmed Password** field. Then click on the **Apply Changes** button.
- By clicking on the **Reset** button, the user name and password fields will become blank indicating that the username and password has been disabled.

### 3.5 TCP/IP Settings



- Click on the **TCP/IP Settings** link on the navigation drop-down menu. You will then see the LAN Interface and SNMP option. The options is described in detail below.

#### 3.5.1 LAN Interface

- Click on the **LAN Interface** link under the **TCP/IP Settings** menu. Using this option you may change the IP address of the device as well as toggle the DHCP setting.

## LAN Interface Setup

This page is used to configure the parameters for local area network which connects to the LAN port of your Access Point. Here you may change the setting for IP address, subnet mask, DHCP, etc..

IP Address:	<input type="text" value="192.168.1.254"/>
Subnet Mask:	<input type="text" value="255.255.255.0"/>
Default Gateway:	<input type="text" value="0.0.0.0"/>
DHCP:	<input type="text" value="Disabled"/> ▼
<input type="button" value="Apply Changes"/> <input type="button" value="Reset"/>	

- **IP Address:** Enter the IP address.
- **Subnet Mask:** Enter the subnet mask for the IP address.
- **Default Gateway:** Enter the IP address for the default gateway.
- **DHCP:** If this device is a DHCP client and will receive its IP settings from a DHCP server, then select **Enabled** from the drop-down list. Enabling the DHCP client will disable the IP address, subnet mask, and default gateway fields. If the DHCP option is **Disabled**, then the IP address, subnet mask, and default gateway fields must be filled in.
- Click on the **Apply Changes** button to confirm the changes. This device will automatically restart once these changes have been applied.

## 4.3.2 SNMP Settings

### SNMP Parameter Setup

This page is used to configure the parameters for simple network management protocol which connects to y change the setting for SNMP demon , read-only and read-write community name, Trap demon, trap IP address

SNMP Daemon:	<input type="radio"/> Disable	<input checked="" type="radio"/> Enable
Read-Only Community Name:	<input type="text" value="public"/>	
Read-Write Community Name:	<input type="text" value="private"/>	
Send SNMP Trap:	<input type="radio"/> Disable	<input checked="" type="radio"/> Enable
Send Trap To:	IP address <input type="text" value="192.168.1.66"/>	Community <input type="text" value="public"/>
<input type="button" value="Apply Changes"/> <input type="button" value="Reset"/>		

- **SNMP Daemon:** Select **Enable** if you would like to use the SNMP feature.
- **Read-Only Community Name:** Specify the password for access the SNMP community for read only access.
- **Read-Write Community Name:** Specify the password for access to the SNMP community with read/write access.
- **Send SNMP Trap:** Select **Enable** if you would like to receive SNMP traps.
- **Send Trap To:** Specify the IP address that would receive the SNMP traps.
- **Trap Community Name:** Specify the password for the SNMP trap community.
- Click on the **Save Settings** button once you have modified the settings.

## 3.6 Wireless



- Click on the **Wireless** link on the navigation drop-down menu. You will then see four options: basic settings, advanced settings security and site survey. Each option is described below.

### 3.6.1 Basic Settings (Infrastructure, Adhoc)

- Click on the **Basic Settings** link under the **Wireless** menu. Using this option you may configure the 802.11b/g settings as well as the frequency, channel, and SSID.

#### Wireless Basic Settings

This page is used to configure the parameters for wireless LAN clients which may connect to your Access Point. Here you may change wireless encryption settings as well as wireless network parameters.

Band:	2.4 GHz (B+G) ▾
Network Type:	Infrastructure ▾
SSID:	EnGenius
Desired BSSID:	000000000000
Channel:	1 ▾
<input type="checkbox"/> Enable Universal Repeater Mode (Acting as AP and client simultaneously)	
SSID of Extended Interface:	
<input type="button" value="Apply Changes"/> <input type="button" value="Reset"/>	

- Band:** Depending on the type of wireless clients that are connected to the network, you may select **B**, **G**, or **B+G**. If you are not sure about which clients will be accessing the wireless networks, it is recommended that you select **B+G** for the best performance.
- Network Type:** Select **Infrastructure** or **Adhoc** from the drop-down list. Infrastructure is a point-to-multipoint (PtMp) topology where as Adhoc is a point-to-point topology (PtP).
- SSID:** The SSID is a unique named shared amongst all the points of the wireless network. The SSID must be identical on all points of the wireless network and cannot exceed 32 characters.
- Desired BSSID** Enter the MAC address of AP Radio.
- Channel:** Select a channel from the drop-down list. The channels available are based on the country's regulation. When selecting Infrastructure mode, a channel is

not required, however, when selecting Adhoc mode, you must select the same channel on all points.

- **Enable Universal Repeater Mode:** Select **Enable** to activate Universal Repeater Mode and type below SSID for extended wireless interface.

### 3.6.2 Advanced Settings

- Click on the **Advanced Settings** link under the **Wireless** menu. On this page you can configure the advanced settings to tweak the performance of your wireless network. Options available are: fragmentation threshold, RTS threshold, beacon interval, output power, preamble type, and 802.11g protection.

## Wireless Advanced Settings

These settings are only for more technically advanced users who have a sufficient knowledge about wi be changed unless you know what effect the changes will have on your Access Point.

<b>Authentication Type:</b>	<input type="radio"/> Open System	<input type="radio"/> Shared Key	<input checked="" type="radio"/> Auto
<b>Fragment Threshold:</b>	<input type="text" value="2346"/>	(256-2346)	
<b>RTS Threshold:</b>	<input type="text" value="2347"/>	(0-2347)	
<b>Beacon Interval:</b>	<input type="text" value="100"/>	(20-1024 ms)	
<b>Ack Timeout:</b>	<input type="text" value="0"/>	(0-255 x 4 us)	
	Note: Ack Timeout default CCK:316 us OFDM:72 us.		
<b>Data Rate:</b>	<input type="text" value="Auto"/>		
<b>Output Power Level(OFDM):</b>	<input type="text" value="High"/>		
<b>Output Power Level(CCK):</b>	<input type="text" value="High"/>		
<b>Preamble Type:</b>	<input checked="" type="radio"/> Long Preamble	<input type="radio"/> Long & Short Preamble	
<b>Transparent Bridge:</b>	<input type="radio"/> Enabled	<input checked="" type="radio"/> Disabled	

- **Authentication Type:** select an authentication method. Options available are **Open System**, **Shared Key** or **Auto**. An open system allows any client to authenticate as long as it conforms to any MAC address filter policies that may have been set. All authentication packets are transmitted without encryption. Shared Key sends an unencrypted challenge text string to any device attempting to communicate with the AP. The device requesting authentication encrypts the challenge text and sends it back to the access point. If the challenge text is encrypted correctly, the access point allows the requesting device to authenticate. It is recommended to select Auto if you are not sure which authentication type is used.
- **Fragment Threshold:** Packets over the specified size will be fragmented in order to improve performance on noisy networks.
- **RTS Threshold:** Packets over the specified size will use the RTS/CTS mechanism to maintain performance in noisy networks and preventing hidden nodes from degrading the performance.
- **Beacon Interval:** Beacons will be sent out to devices at the specified intervals. This value is measured in milliseconds (ms).



- **ACK Timeout:** You may specify a value for the acknowledge timeout.
- **Data Rate:** Select a data rate from the drop-down list. However, it is recommended to select **auto** for the best performance.
- **Output Power Level (OFDM/CCK):** You may have the different application distance of the device by selecting a value from the drop-down list. This feature can be helpful in restricting the coverage area of the wireless network.
- You can arrange the different data rate in distance in Bridge mode. Please refer below table. This table only for 11g and 11b/g mix mode

	6M-24M	36M	48M	54M
High	∨	∨	∨	Great
Ultra High	∨	∨	Great	N/A
Super	∨	Great	N/A	N/A
Extreme	Great	N/A	N/A	N/A

- **Preamble Type:** For best performance, all devices on the wireless network should use the same preamble type. However, the wireless network will still function even though the wrong preamble type is used.
- **Transparent Bridge:** Select **Enable** to activate the Transparent Bridging feature. The MAC address of this device will be transparent, and clients from either side of the network will be able to pick each other. The connected AP shall be 3220 series.
- Click on the **Apply Changes** button to confirm the changes. This device will automatically restart once these changes have been applied.

### 3.6.3 Security

- Click on the **Security** link under the **Wireless** menu. On this page you can configure the authentication and encryption settings such as WEP, WPA, and 80.1x.

#### 3.6.3.1 Encryption Disabled

#### Wireless Security Setup

This page allows you setup the wireless security. Turn on WEP or WPA by using Encryption Keys your wireless network.

---

**Encryption:**

**Use 802.1x Authentication**
 WEP 64bits
  WEP 128bits

**WPA Authentication Mode:**
 Enterprise (RADIUS)
  Personal (Pre-Shared Key)

**WPA Cipher Suite:**
 TKIP
  AES

**WPA2 Cipher Suite:**
 TKIP
  AES

**Pre-Shared Key Format:**

**Pre-Shared Key:**

**Enable Pre-Authentication**

**Authentication RADIUS Server:**
 Port 
 IP address 
 Password

*Note: When encryption WEP is selected, you must set WEP key value.*

- Encryption:** Select **None** from the drop-down list if your wireless network does not use any type of encryption.
- Click on the **Apply Changes** button to confirm the changes. This device will automatically restart once these changes have been applied.

### 3.6.3.2 WEP 64-bit / 128-bit

## Wireless Security Setup

This page allows you setup the wireless security. Turn on WEP or WPA by using Encryption Keys in your wireless network.

---

**Encryption:**

Use 802.1x Authentication
  WEP 64bits
  WEP 128bits

**WPA Authentication Mode:**
 Enterprise (RADIUS)
  Personal (Pre-Shared Key)

**WPA Cipher Suite:**
 TKIP
  AES

**WPA2 Cipher Suite:**
 TKIP
  AES

**Pre-Shared Key Format:**

**Pre-Shared Key:**

Enable Pre-Authentication

**Authentication RADIUS Server:**
 Port 
 IP address 
 Password

*Note: When encryption WEP is selected, you must set WEP key value.*

- **Encryption:** Select **WEP** from the drop-down list if your wireless network uses WEP encryption. WEP is an acronym for Wired Equivalent Privacy, and is a security protocol that provides the same level of security for wireless networks as for a wired network.
- **Set WEP Key:** Click on this button to configure the WEP Key.

## Wireless WEP Key Setup

This page allows you setup the WEP key value. You could choose use 64-bit or 128-bit as the encryption key, and select ASCII or Hex as the format of input value.

---

**Key Length:**

**Key Format:**

**Default Tx Key:**

**Encryption Key 1:**

**Encryption Key 2:**

**Encryption Key 3:**

**Encryption Key 4:**

- **Key Length:** Select a **64-bit** or **128-bit** from the drop-down list.
- **Key Format:** Select a key format from the drop-down list. 64bit-hex keys require 10 characters, where as 128-bit keys require 26 characters. A hex key is defined as a number between 0 through 9 and letter between A through F.
- **Default Tx Key:** You may use up to four different keys for four different networks. Select the current key that will be used.
- **Encryption Key 1-4:** You may enter four different WEP keys.
- Click on the **Apply Changes** button to confirm the changes and then click on the **Close** button to return to the pervious window.

### 3.6.3.3 WPA / WPA2 Passphrase

#### Wireless Security Setup

This page allows you setup the wireless security. Turn on WEP or WPA by using Encryption Keys your wireless network.

<b>Encryption:</b>	WPA2	<input type="button" value="Set WEP Key"/>
<input type="checkbox"/> Use 802.1x Authentication	<input type="radio"/> WEP 64bits	<input type="radio"/> WEP 128bits
<b>WPA Authentication Mode:</b>	<input type="radio"/> Enterprise (RADIUS)	<input checked="" type="radio"/> Personal (Pre-Shared Key)
<b>WPA Cipher Suite:</b>	<input type="radio"/> TKIP	<input checked="" type="radio"/> AES
<b>WPA2 Cipher Suite:</b>	<input checked="" type="radio"/> TKIP	<input type="radio"/> AES
<b>Pre-Shared Key Format:</b>	Passphrase	
<b>Pre-Shared Key:</b>	12345	
<input type="checkbox"/> Enable Pre-Authentication		
<b>Authentication RADIUS Server:</b>	Port 1812	IP address 192.168.1.46 Password

*Note: When encryption WEP is selected, you must set WEP key value.*

- **Encryption:** Select **WPA** or **WPA2** from the drop-down list if your wireless network uses this encryption. WPA (Wi-Fi Protected Access) was designed to improve upon the security features of WEP (Wired Equivalent Privacy). The technology is designed to work with existing Wi-Fi products that have been enabled with WEP. WPA provides improved data encryption through the Temporal Integrity Protocol (TKIP), which scrambles the keys using a hashing algorithm and by adding an integrity checking feature which makes sure that keys haven't been tampered with.
- **WPA Authentication Mode:** Select the **Personal (Pre-Shared Key)** radio button.
- **WPA/WPA2:** Select **TKIP** or **AES** as the cipher suite.
- **Pre-Shared Key Format:** Select **Passphrase** from the drop-down list.
- **Pre-Shared Key:** Enter the pass phrase here, this should be between 8 and 63 characters.
- Click on the **Apply Changes** button to confirm the changes. This device will automatically restart once these changes have been applied.

### 3.6.3.4 WPA / WPA2 RADIUS Authentication

#### Wireless Security Setup

This page allows you setup the wireless security. Turn on WEP or WPA by using Encryption Keys your wireless network.

---

**Encryption:**

Use 802.1x Authentication   
 WEP 64bits     WEP 128bits

**WPA Authentication Mode:**   
 Enterprise (RADIUS)     Personal (Pre-Shared Key)

**WPA Cipher Suite:**   
 TKIP     AES

**WPA2 Cipher Suite:**   
 TKIP     AES

**Pre-Shared Key Format:**

**Pre-Shared Key:**

Enable Pre-Authentication

**Authentication RADIUS Server:**   
Port    
IP address    
Password

*Note: When encryption WEP is selected, you must set WEP key value.*

- **Encryption:** Select **WPA** or **WPA2** from the drop-down list if your wireless network uses this encryption. WPA (Wi-Fi Protected Access) was designed to improve upon the security features of WEP (Wired Equivalent Privacy). The technology is designed to work with existing Wi-Fi products that have been enabled with WEP. WPA provides improved data encryption through the Temporal Integrity Protocol (TKIP), which scrambles the keys using a hashing algorithm and by adding an integrity checking feature which makes sure that keys haven't been tampered with.
- **WPA Authentication Mode:** Select the **Enterprise (RADIUS)** radio button.
- **WPA/WPA2:** Select **TKIP** or **AES** as the cipher suite.
- **RADIUS Port:** Enter the port number of the RADIUS server. The default is usually 1812.
- **RADIUS IP Address:** Enter the IP address of the RADIUS server.
- **RADIUS Password:** Enter the shared password of the RADIUS server.
- Click on the **Apply Changes** button to confirm the changes. This device will automatically restart once these changes have been applied.

### 3.6.4 Site Survey

- Click on the **Site Survey** link under the **Wireless** menu. This page displays the list of Access Points in the coverage area and allows you to connect to them if you have the required credentials.

#### Wireless Site Survey

This page provides tool to scan the wireless network. If any Access Point or IBSS is found, you could client mode is enabled.

SSID	BSSID	Channel	Type	Encrypt	Signal	Select
DinoNet	00:20:ed:0d:26:96	11 (B)	AP	WEP	69	<input type="radio"/>
TDL-DI-624	00:0f:3d:3d:8e:02	6 (B+G)	AP	WEP	27	<input checked="" type="radio"/>
default	00:90:96:28:24:26	6 (B)	AP	no	26	<input type="radio"/>



- The site survey table lists the following:
  - SSID: This is the unique name of the wireless network.
  - BSSID: This is the MAC address of the Access Point.
  - Channel: This indicates the current channel that the Access Point is operating on, along with the 802.11 network type (B, G, or B+G).
  - Encrypt: This indicates the encryption type.
  - Signal: This indicates the signal strength of the Access Point.
- You may select the radio button of a specific Access Point and then click on the **Conenct** button. If the credentials of this device match that of the Access Point that you will be connected immediately, if not, you must specify the appropriate credentials.
- You may click on the Refresh button at any time to re-scan the area.

## 5 Access Point Mode – Web Configuration

### 3.7 Logging In

- To configure the Access Point through the web-browser, enter the IP address of the Bridge (default: **192.168.1.2**) into the address bar of the web-browser and press **Enter**.



- Make sure that the Access Point and your computers are on the same subnet. Refer to **Chapter 2** in order to configure the IP address of your computer.
- Log in User name : **admin**; Password : **admin**



- After logging in you will graphical user interface (GUI) of the Access Point. The navigation drop-down menu on left is divided into three main sections:
  - Management:** This includes operation mode, status, statistics, logs, upgrade firmware, save/reload settings, and password.
  - TCP/IP Settings:** This includes the configuration of the LAN port and settings for the LAN IP, subnet mask, DHCP client, spanning tree and MAC cloning.
  - Wireless:** This includes the basic, advanced, security and site-survey settings for the wireless interface.
- The Access Point status page is also displayed once you have logged in. This includes details about the system, wireless, and TCP/IP configuration.

## Access Point Status

This page shows the current status and some basic settings of the device.

<b>System</b>	
<b>Uptime</b>	0day:1h:8m:54s
<b>Firmware Version</b>	v1.39.06
<b>Wireless Configuration</b>	
<b>Mode</b>	AP+WDS
<b>Band</b>	2.4 GHz (B+G)
<b>SSID</b>	wireless_g
<b>Channel Number</b>	1
<b>Encryption</b>	Disabled(AP), Disabled(WDS)
<b>BSSID</b>	00:02:6f:49:1b:d6
<b>Associated Clients</b>	0
<b>TCP/IP Configuration</b>	
<b>Attain IP Protocol</b>	Fixed IP
<b>IP Address</b>	192.168.1.2
<b>Subnet Mask</b>	255.255.255.0
<b>Default Gateway</b>	0.0.0.0
<b>DHCP</b>	Disabled
<b>MAC Address</b>	00:02:6f:49:1b:d6

- **System**
  - **Uptime:** Duration of time since the device was last reset.
  - **Firmware version:** Version of the firmware that is currently loaded on the device.
- **Wireless Configuration:**
  - **Mode:** Wireless configuration mode such as client bridge, AP, or WDS.
  - **Band:** Frequency and IEEE 802.11 operation mode (b-only, g-only, or b+g).
  - **SSID:** The name used to identify the wireless network.
  - **Channel Number:** The channel used to communicate on the wireless network.
  - **Encryption:** The type of security used on this network. It may be disabled, WEP, WPA, etc.
  - **BSSID:** The MAC address of the SSID.
  - **Associated Clients:** Displays the number of clients currently associated to the Access Point.
- **TCP/IP Configuration:**
  - **Attain IP Protocol:** The IP address setting may be fixed or static.
  - **IP Address:** Displays the current IP address of the LAN port.
  - **Subnet Mask:** Displays the current subnet mask for the IP address.
  - **Default Gateway:** Displays the default gateway for the device.
  - **DHCP:** Displays the DHCP setting.
  - **MAC Address:** Displays the MAC address of the device.



## 3.8 Management



- Click on the **Management** link on the navigation drop-down menu. You will then see five options: operation mode, status, statistics, log, upgrade firmware, save/reload settings, and password. Each option is described below.

### 3.8.1 Operation Mode

- Click on the **Operation Mode** link under the **Management** menu. The **Operation Mode** allows you to switch from Access Point to Client Bridge mode.

#### Operation Mode

You can setup different modes to LAN and WLAN interface for NAT and bridging function.

- |   |   |
|---|---|
| <input checked="" type="radio"/> <b>Bridge:</b> | Client Bridge provides connectivity between two wired LAN segments, and is used in point-to-point or point-to-multipoint configurations.  |
| <input type="radio"/> <b>Bridge Router:</b>     | Client Router designed to connect a small number of wireless nodes to a single device for LAN and WLAN connectivity to another network.   |
| <input type="radio"/> <b>AP:</b>                | Access Point is probably the most common wireless LAN device with which you will work as a wireless LAN administrator. Access point provides clients with a point of access into a network. |

Apply Change

Reset

- Select the **AP**, **Bridge** or **Bridge Router** and then click on the **Apply Change** button.

Apply Change

Reset

Please wait...



- Wait for about a minute until you see the Pop-Up message.
- Click on the **OK** button and then enter the specified IP address into the web-browser.

- Please wait and then enter the specified IP address into the web-browser. The previous settings will be retained in AP mode. .
- Refer to **Chapter 4** to learn how to configure this device in Bridge/Bridge Router mode.

### 3.8.2 Status

- Click on the **Status** link under the **Management** menu. The **Status** page is the first page that is displayed once you have logged in. This includes details about the system, wireless, and TCP/IP configuration.

#### Access Point Status

This page shows the current status and some basic settings of the device.

<b>System</b>	
<b>Uptime</b>	0day:1h:8m:54s
<b>Firmware Version</b>	v1.39.06
<b>Wireless Configuration</b>	
<b>Mode</b>	AP+WDS
<b>Band</b>	2.4 GHz (B+G)
<b>SSID</b>	wireless_g
<b>Channel Number</b>	1
<b>Encryption</b>	Disabled(AP), Disabled(WDS)
<b>BSSID</b>	00:02:6f:49:1b:d6
<b>Associated Clients</b>	0
<b>TCP/IP Configuration</b>	
<b>Attain IP Protocol</b>	Fixed IP
<b>IP Address</b>	192.168.1.2
<b>Subnet Mask</b>	255.255.255.0
<b>Default Gateway</b>	0.0.0.0
<b>DHCP</b>	Disabled
<b>MAC Address</b>	00:02:6f:49:1b:d6

- **System**
  - **Uptime:** Duration of time since the device was last reset.
  - **Firmware version:** Version of the firmware that is currently loaded on the device.
- **Wireless Configuration:**
  - **Mode:** Wireless configuration mode such as client bridge, AP, or WDS.
  - **Band:** Frequency and IEEE 802.11 operation mode (b-only, g-only, or b+g).
  - **SSID:** The name used to identify the wireless network.
  - **Channel Number:** The channel used to communicate on the wireless network.
  - **Encryption:** The type of security used on this network. It may be disabled, WEP, WPA, etc.
  - **BSSID:** The MAC address of the SSID.

- **Associated Clients:** Displays the number of clients currently associated to the Access Point.
- **TCP/IP Configuration:**
  - **Attain IP Protocol:** The IP address setting may be fixed or static.
  - **IP Address:** Displays the current IP address of the LAN port.
  - **Subnet Mask:** Displays the current subnet mask for the IP address.
  - **Default Gateway:** Displays the default gateway for the device.
  - **DHCP:** Displays the DHCP setting.
  - **MAC Address:** Displays the MAC address of the device.

### 3.8.3 Statistics

- Click on the **Statistics** link under the **Management** menu. This page displays the number of sent and received packets on the Ethernet and Wireless interface.

#### Statistics

This page shows the packet counters for transmission and reception regarding to wireless and Ethernet networks.

<b>Wireless LAN</b>	<i>Sent Packets</i>	56501
	<i>Received Packets</i>	30676
<b>Ethernet LAN</b>	<i>Sent Packets</i>	2232
	<i>Received Packets</i>	1742

- Since the packet counter is not dynamic, you must click on the **Refresh** button for the most recent statistics.

### 3.8.4 Log

- Click on the **Log** link under the **Management** menu. The **Log** page displays a list of events that are triggered on the Ethernet and Wireless interface. This log can be referred when an unknown error occurs on the system or when a report needs to be sent to the technical support department for debugging purposes.

#### System Log

This page can be used to set remote log server and show the system log.

**Enable Log**  
 system all       wireless  
 **Enable Remote Log**      Log Server IP Address:

- In order for the log to record all the events, you must first place a check in the **Enable Log** or **Enable Remote Log (Log Server required)** check box.
- Select **system all** or **wireless** depending on the type of events you want recorded.
- Since the log is not dynamic, you must click on the **Refresh** button for the most recent events, or click on the **Clear** button to clear the log.

### 3.8.5 Upgrade Firmware

- Click on the **Upgrade Firmware** link under the **Management** menu. This page is used to upgrade the firmware on the device. Make sure that downloaded the appropriate firmware from your vendor.

#### Upgrade Firmware

This page allows you upgrade the Access Point firmware to new version. Please note, do not power off the device during the upload because it may crash the system.

---

Select File:

- Click on the Browse button and then select the appropriate firmware and then click on the **Upload** button.  
Note: The upgrade process may take about 1 minute to complete. Do not power off the device during this process as it may crash the device and make it unusable. The device will restart automatically once the upgrade is complete.

### 3.8.6 Save / Reload Settings, Reset to Default

- Click on the **Save / Reload Setting** link under the **Management** menu. This option is used to save the current settings of the device in a file on your local disk or load settings on to the device from a local disk. This feature is very handy for administrators who have several devices that need to be configured with the same settings.
- This page also allows you to reset the device to its factory default settings.

## Save/Reload Settings

This page allows you save current settings to a file or reload the settings from the file which was saved previously. Besides, you could reset the current configuration to factory default.

---

Save Settings to File:	<input type="button" value="Save..."/>
Load Settings from File:	<input type="text"/> <input type="button" value="Browse..."/> <input type="button" value="Upload"/>
Reset Settings to Default:	<input type="button" value="Reset"/>
Restart the System:	<input type="button" value="Restart"/>

- Click on the **Save** button to save the current settings to a file on the local disk.
- Click on the **Browse** button to select the settings file and then click on the Upload button to load the previously saved settings.
- Click on the **Reset** button to reset the device to its factory default settings. Click **Restart** to reboot the device.

### 3.8.7 Password

- Click on the **Password** link under the **Management** menu. This option allows you to create a user name and password for the device. By default, this device is configured without a user name and password. For security reasons it is highly recommended that you create a user name and password.

#### Password Setup

This page is used to set the account to access the web server of Access Point. Empty user name and password will disable the protection.

---

User Name:	<input type="text"/>
New Password:	<input type="text"/>
Confirmed Password:	<input type="text"/>

- Enter a **user name** into the first field.
- Enter a password into the **New Password** field and then re-type the password into the **Confirmed Password** field. Then click on the **Apply Changes** button.
- By clicking on the **Reset** button, the user name and password fields will become blank indicating that the username and password has been disabled.

## 3.9 TCP/IP Settings



- Click on the **TCP/IP Settings** link on the navigation drop-down menu. You will then see the LAN Interface and SNMP option. The options are described in detail below.

### 3.9.1 LAN Interface

- Click on the **LAN Interface** link under the **TCP/IP Settings** menu. Using this option you may change the IP address of the device as well as toggle the DHCP server/client and 802.1d spanning tree feature.

#### 3.9.1.1 Static IP Address

##### LAN Interface Setup

This page is used to configure the parameters for local area network which connects to change the setting for IP address, subnet mask, DHCP, etc..

<b>IP Address:</b>	<input type="text" value="192.168.1.254"/>
<b>Subnet Mask:</b>	<input type="text" value="255.255.255.0"/>
<b>Default Gateway:</b>	<input type="text" value="0.0.0.0"/>
<b>DHCP:</b>	<input type="text" value="Disabled"/> ▾
<b>DHCP Client Range:</b>	<input type="text" value="192.168.1.100"/> - <input type="text" value="192.168.1.200"/> <input type="button" value="Show Client"/>
<b>DNS Server:</b>	<input type="text"/>
<b>802.1d Spanning Tree:</b>	<input type="text" value="Disabled"/> ▾

- IP Address:** Enter the IP address.
- Subnet Mask:** Enter the subnet mask for the IP address.
- Default Gateway:** Enter the IP address for the default gateway.
- DHCP:** Since a static IP address is used, this option must be set to **Disabled**. If this device is a DHCP client and will receive its IP settings from a DHCP server, then select **Enabled** from the drop-down list. Enabling the DHCP client will disable the IP

address, subnet mask, and default gateway fields. If the DHCP option is **Disabled**, then the IP address, subnet mask, and default gateway fields must be filled in.

- **802.1d Spanning Tree:** Select **Enabled** from the drop-down list if you if you would like to use the spanning tree feature.
- Click on the **Apply Changes** button to confirm the changes. This device will automatically restart once these changes have been applied.

### 3.9.1.2 DHCP Client

#### LAN Interface Setup

This page is used to configure the parameters for local area network which connects to the LAN port change the setting for IP address, subnet mask, DHCP, etc..

<b>IP Address:</b>	<input type="text" value="192.168.1.254"/>
<b>Subnet Mask:</b>	<input type="text" value="255.255.255.0"/>
<b>Default Gateway:</b>	<input type="text" value="0.0.0.0"/>
<b>DHCP:</b>	<input type="text" value="Client"/> ▼
<b>DHCP Client Range:</b>	<input type="text" value="192.168.1.100"/> - <input type="text" value="192.168.1.200"/> <input type="button" value="Show Client"/>
<b>DNS Server:</b>	<input type="text"/>
<b>802.1d Spanning Tree:</b>	<input type="text" value="Disabled"/> ▼

- **DHCP:** If this device is a DHCP client and will receive its IP settings from a DHCP server, then select **Client** from the drop-down list. Enabling the DHCP client will disable the IP address, subnet mask, and default gateway fields. If the DHCP option is **Disabled**, then the IP address, subnet mask, and default gateway fields must be filled in.
- **802.1d Spanning Tree:** Select **Enabled** from the drop-down list if you if you would like to use the spanning tree feature.
- Click on the **Apply Changes** button to confirm the changes. This device will automatically restart once these changes have been applied.

### 3.9.1.3 DHCP Server

#### LAN Interface Setup

This page is used to configure the parameters for local area network which connects to the LAN port change the setting for IP addresss, subnet mask, DHCP, etc..

---

<b>IP Address:</b>	<input type="text" value="192.168.1.254"/>
<b>Subnet Mask:</b>	<input type="text" value="255.255.255.0"/>
<b>Default Gateway:</b>	<input type="text" value="0.0.0.0"/>
<b>DHCP:</b>	<input type="text" value="Server"/> ▾
<b>DHCP Client Range:</b>	<input type="text" value="192.168.1.100"/> — <input type="text" value="192.168.1.200"/> <input type="button" value="Show Client"/>
<b>DNS Server:</b>	<input type="text"/>
<b>802.1d Spanning Tree:</b>	<input type="text" value="Disabled"/> ▾

- **IP Address:** Enter the IP address.
- **Subnet Mask:** Enter the subnet mask for the IP address.
- **Default Gateway:** Enter the IP address for the default gateway.
- **DHCP:** Select **Server** from the drop-down list since this device is the DHCP server. This device will distribute the IP addresses to the clients associated.
- **DHCP Client Range:** Enter the first and last IP address of the range. Make sure that the range is on the same subnet as the device. You may click on the Show Client button to view a list of IP addresses that were distributed.
- **DNS Server:** Enter the IP address of the DNS server.
- **802.1d Spanning Tree:** Select **Enabled** from the drop-down list if you if you would like to use the spanning tree feature.
- Click on the **Apply Changes** button to confirm the changes. This device will automatically restart once these changes have been applied.



## 3.9.2 SNMP Settings

### SNMP Parameter Setup

This page is used to configure the parameters for simple network management protocol which can change the setting for SNMP demon, read-only and read-write community name, Trap demon, trap

<b>SNMP Daemon:</b>	<input type="radio"/> Disable	<input checked="" type="radio"/> Enable
<b>Read-Only Community Name:</b>	<input type="text" value="public"/>	
<b>Read-Write Community Name:</b>	<input type="text" value="private"/>	
<b>Send SNMP Trap:</b>	<input type="radio"/> Disable	<input checked="" type="radio"/> Enable
<b>Send Trap To:</b>	IP address <input type="text" value="192.168.1.66"/>	Community <input type="text" value="public"/>
<input type="button" value="Apply Changes"/> <input type="button" value="Reset"/>		

- **SNMP Daemon:** Select **Enable** if you would like to use the SNMP feature.
- **Read-Only Community Name:** Specify the password for access the SNMP community for read only access.
- **Read-Write Community Name:** Specify the password for access to the SNMP community with read/write access.
- **Send SNMP Trap:** Select **Enable** if you would like to receive SNMP traps.
- **Send Trap To:** Specify the IP address that would receive the SNMP traps.
- **Trap Community Name:** Specify the password for the SNMP trap community.
- Click on the **Save Settings** button once you have modified the settings.

## 3.10 Wireless



- Click on the **Wireless** link on the navigation drop-down menu. You will then see five options: basic settings, advanced settings security, access control and WDS. Each option is described below.

### 3.10.1 Basic Settings

- Click on the **Basic Settings** link under the **Wireless** menu. Using this option you may configure the 802.11b/g settings as well as the frequency, channel, and SSID.

#### Wireless Basic Settings

This page is used to configure the parameters for wireless LAN clients which may connect to your Access Point. Here you may change wireless encryption settings as well as wireless network parameters.

**Band:**

**SSID:**

**Channel:**

**Associated Clients:**

**Enable Universal Repeater Mode (Acting as AP and client simultaneously)**

**SSID of Extended Interface:**

- Band:** Select the IEEE 802.11 mode from the drop-down list. Options available are **2.4GHz (B)**, **2.4GHz (G)**, or **2.4GHz (B+G)**. Select the appropriate mode based on the type of wireless network. For example, if you are sure that the wireless network will be using only IEEE 802.11g clients, then it is recommended to select 2.4GHz (G) instead of 2.4GHz (B+G) which will reduce the performance of the wireless network.
- SSID:** The SSID is a unique named shared amongst all the points of the wireless network. The SSID must be identical on all points of the wireless network and cannot exceed 32 characters.
- Channel:** Select a channel from the drop-down list. The channels available are based on the country's regulation. When selecting Infrastructure mode, a channel is not required, however, when selecting Adhoc mode, you must select the same channel on all points.
- Show Active Clients:** Click on this button to view a list of associated clients.
- Click on the **Apply Changes** button to confirm the changes. This device will automatically restart once these changes have been applied.
- Enable Universal Repeater Mode:** Select **Enable** to activate Universal Repeater Mode and type below SSID for extended wireless interface.

### 3.10.2 Advanced Settings

- Click on the **Advanced Settings** link under the **Wireless** menu. On this page you can configure the advanced settings to tweak the performance of your wireless network. Options available are: fragmentation threshold, RTS threshold, beacon interval, output power, preamble type, broadcast SSID, IAPP, and 802.11g protection.

#### Wireless Advanced Settings

These settings are only for more technically advanced users who have a sufficient knowledge about wireless LAN. These settings should not be changed unless you know what effect the changes will have on your Access Point.

<b>Authentication Type:</b>	<input type="radio"/> Open System	<input type="radio"/> Shared Key	<input checked="" type="radio"/> Auto
<b>Fragment Threshold:</b>	<input type="text" value="2346"/>	(256-2346)	
<b>RTS Threshold:</b>	<input type="text" value="2347"/>	(0-2347)	
<b>Beacon Interval:</b>	<input type="text" value="100"/>	(20-1024 ms)	
<b>Ack Timeout:</b>	<input type="text" value="0"/>	(0-255 x 4 us)	
	Note: Ack Timeout default CCK:316 us OFDM:72 us.		
<b>Data Rate:</b>	<input type="text" value="Auto"/>		
<b>Output Power Level(OFDM):</b>	<input type="text" value="High"/>		
<b>Output Power Level(CCK):</b>	<input type="text" value="High"/>		
<b>Preamble Type:</b>	<input checked="" type="radio"/> Long Preamble	<input type="radio"/> Long & Short Preamble	
<b>Broadcast SSID:</b>	<input checked="" type="radio"/> Enabled	<input type="radio"/> Disabled	
<b>IAPP:</b>	<input checked="" type="radio"/> Enabled	<input type="radio"/> Disabled	
<b>802.11g Protection:</b>	<input checked="" type="radio"/> Enabled	<input type="radio"/> Disabled	
<b>User Isolation:</b>	<input type="radio"/> Enabled	<input checked="" type="radio"/> Disabled	
<b>QoS(WMM):</b>	<input type="radio"/> Enabled	<input checked="" type="radio"/> Disabled	

- Authentication Type:** select an authentication method. Options available are **Open System**, **Shared Key** or **Auto**. An open system allows any client to authenticate as long as it conforms to any MAC address filter policies that may have been set. All authentication packets are transmitted without encryption. Shared Key sends an unencrypted challenge text string to any device attempting to communicate with the AP. The device requesting authentication encrypts the challenge text and sends it back to the access point. If the challenge text is encrypted correctly, the access point allows the requesting device to authenticate. It is recommended to select Auto if you are not sure which authentication type is used.
- Fragment Threshold:** Packets over the specified size will be fragmented in order to improve performance on noisy networks.
- RTS Threshold:** Packets over the specified size will use the RTS/CTS mechanism to maintain performance in noisy networks and preventing hidden nodes from degrading the performance.

- **Beacon Interval:** Beacons will be sent out to devices at the specified intervals. This value is measured in milliseconds (ms).
- **ACK Timeout:** You may specify a value for the acknowledge timeout.
- **Data Rate:** Select a data rate from the drop-down list. However, it is recommended to select **auto** for the best performance.
- **Data Rate:** If you would like to force a data rate, you may select one from the drop-down list. However, for best performance it is recommended to use the **Auto** setting.
- **Output Power Level(OFDM/CCK):** You may have the different application distance of the device by selecting a value from the drop-down list. This feature can be helpful in restricting the coverage area of the wireless network.
- You can arrange the different data rate in distance in Access Point mode. Please refer below table. The table only for 11g and 11b/g mix mode

	6M-24M	36M	48M	54M
High	∨	∨	∨	Great
Ultra High	∨	∨	Great	N/A
Super	∨	Great	NA	N/A
Extreme	Great	N/A	N/A	N/A

- **Preamble Type:** For best performance, all devices on the wireless network should use the same preamble type. However, the wireless network will still function even though the wrong preamble type is used.
- **Broadcast SSID:** This is a security feature that is enabled by default. This allows clients on the wireless network to run a site survey and detect this Access Point. Select **Disabled** if you do not want this Access Point detected in a site survey.
- **IAPP:** It is recommended to **Enable** the Inter-Access Point Protocol (IAPP) if you would like the clients on the wireless network to seamlessly roam between Access Points of the same SSID.
- **802.11g Protection:** If your wireless network is using both 802.11b and 802.11g devices then it is recommended to enable this feature so that the 802.11b devices will not degrade the performance of 802.11g devices.
- **User Isolation:** Click "**Enabled**" to stop packet transmission between Wireless Clients.
- Click on the **Apply Changes** button to confirm the changes. This device will automatically restart once these changes have been applied.

### 3.10.3 Security

- Click on the **Security** link under the **Wireless** menu. On this page you can configure the authentication and encryption settings such as WEP, WPA, and 802.1x.

#### 3.10.3.1 Encryption Disabled

##### Wireless Security Setup

This page allows you setup the wireless security. Turn on WEP or WPA by using Encryption Keys your wireless network.

<b>Encryption:</b>	None ▾	<input type="button" value="Set WEP Key"/>
<input type="checkbox"/> <b>Use 802.1x Authentication</b>	<input checked="" type="radio"/> WEP 64bits	<input type="radio"/> WEP 128bits
<b>WPA Authentication Mode:</b>	<input type="radio"/> Enterprise (RADIUS)	<input checked="" type="radio"/> Personal (Pre-Shared Key)
<b>WPA Cipher Suite:</b>	<input checked="" type="radio"/> TKIP	<input type="radio"/> AES
<b>WPA2 Cipher Suite:</b>	<input type="radio"/> TKIP	<input checked="" type="radio"/> AES
<b>Pre-Shared Key Format:</b>	Passphrase ▾	
<b>Pre-Shared Key:</b>	<input type="text"/>	
<input type="checkbox"/> <b>Enable Pre-Authentication</b>		
<b>Authentication RADIUS Server:</b>	Port <input type="text" value="1812"/>	IP address <input type="text"/>
	<input type="text"/>	Password <input type="text"/>

*Note: When encryption WEP is selected, you must set WEP key value.*

- Encryption:** Select **None** from the drop-down list if your wireless network does not use any type of encryption.
- Click on the **Apply Changes** button to confirm the changes. This device will automatically restart once these changes have been applied.

### 3.10.3.2 WEP 64-bit / 128-bit

#### Wireless Security Setup

This page allows you setup the wireless security. Turn on WEP or WPA by using Encryption Keys in your wireless network.

---

**Encryption:**

Use 802.1x Authentication
  WEP 64bits
  WEP 128bits

**WPA Authentication Mode:**
 Enterprise (RADIUS)
  Personal (Pre-Shared Key)

**WPA Cipher Suite:**
 TKIP
  AES

**WPA2 Cipher Suite:**
 TKIP
  AES

**Pre-Shared Key Format:**

**Pre-Shared Key:**

Enable Pre-Authentication

**Authentication RADIUS Server:**
 Port 
 IP address 
 Password

*Note: When encryption WEP is selected, you must set WEP key value.*

- **Encryption:** Select **WEP** from the drop-down list if your wireless network uses WEP encryption. WEP is an acronym for Wired Equivalent Privacy, and is a security protocol that provides the same level of security for wireless networks as for a wired network.
- **Set WEP Key:** Click on this button to configure the WEP Key.

#### Wireless WEP Key Setup

This page allows you setup the WEP key value. You could choose use 64-bit or 128-bit as the encryption key, and select ASCII or Hex as the format of input value.

---

**Key Length:**

**Key Format:**

**Default Tx Key:**

**Encryption Key 1:**

**Encryption Key 2:**

**Encryption Key 3:**

**Encryption Key 4:**

- **Key Length:** Select a **64-bit** or **128-bit** from the drop-down list.
- **Key Format:** Select a key format from the drop-down list. 64bit-hex keys require 10 characters, where as 128-bit keys require 26 characters. A hex key is defined as a number between 0 through 9 and letter between A through F.
- **Default Tx Key:** You may use up to four different keys for four different networks. Select the current key that will be used.
- **Encryption Key 1-4:** You may enter four different WEP keys.
- Click on the **Apply Changes** button to confirm the changes and then click on the **Close** button to return to the pervious window.

### 3.10.3.3 WPA / WPA2 / WPA2 Mixed Passphrase

#### Wireless Security Setup

This page allows you setup the wireless security. Turn on WEP or WPA by using Encryption Keys your wireless network.

<b>Encryption:</b>	<input type="text" value="WPA2"/>	<input type="button" value="Set WEP Key"/>
<input type="checkbox"/> Use 802.1x Authentication	<input type="radio"/> WEP 64bits	<input type="radio"/> WEP 128bits
<b>WPA Authentication Mode:</b>	<input type="radio"/> Enterprise (RADIUS)	<input checked="" type="radio"/> Personal (Pre-Shared Key)
<b>WPA Cipher Suite:</b>	<input type="radio"/> TKIP	<input checked="" type="radio"/> AES
<b>WPA2 Cipher Suite:</b>	<input checked="" type="radio"/> TKIP	<input type="radio"/> AES
<b>Pre-Shared Key Format:</b>	<input type="text" value="Passphrase"/>	
<b>Pre-Shared Key:</b>	<input type="text" value="12345"/>	
<input type="checkbox"/> Enable Pre-Authentication		
<b>Authentication RADIUS Server:</b>	Port <input type="text" value="1812"/>	IP address <input type="text" value="192.168.1.46"/>
		Password <input type="text"/>

*Note: When encryption WEP is selected, you must set WEP key value.*

- **Encryption:** Select **WPA**, **WPA2** or **WPA2\_Mixed** from the drop-down list if your wireless network uses this encryption. WPA (Wi-Fi Protected Access) was designed to improve upon the security features of WEP (Wired Equivalent Privacy). The technology is designed to work with existing Wi-Fi products that have been enabled with WEP. WPA provides improved data encryption through the Temporal Integrity Protocol (TKIP), which scrambles the keys using a hashing algorithm and by adding an integrity checking feature which makes sure that keys haven't been tampered with.
- **WPA Authentication Mode:** Select the **Personal (Pre-Shared Key)** radio button.
- **WPA/WPA2:** Select **TKIP**, **AES** or both as the cipher suite.
- **Pre-Shared Key Format:** Select **Passphrase** from the drop-down list.
- **Pre-Shared Key:** Enter the pass phrase; this should be between 8 and 63 characters.
- Click on the **Apply Changes** button to confirm the changes. This device will automatically restart once these changes have been applied.

### 3.10.3.4 WPA / WPA2 / WPA2 Mixed RADIUS Authentication

#### Wireless Security Setup

This page allows you setup the wireless security. Turn on WEP or WPA by using Encryption Keys your wireless network.

<b>Encryption:</b>	<input type="text" value="WPA"/>	<input type="button" value="Set WEP Key"/>
<input type="checkbox"/> Use 802.1x Authentication	<input checked="" type="radio"/> WEP 64bits	<input type="radio"/> WEP 128bits
<b>WPA Authentication Mode:</b>	<input checked="" type="radio"/> Enterprise (RADIUS)	<input type="radio"/> Personal (Pre-Shared Key)
<b>WPA Cipher Suite:</b>	<input type="radio"/> TKIP	<input checked="" type="radio"/> AES
<b>WPA2 Cipher Suite:</b>	<input type="radio"/> TKIP	<input checked="" type="radio"/> AES
<b>Pre-Shared Key Format:</b>	<input type="text" value="Passphrase"/>	
<b>Pre-Shared Key:</b>	<input type="text"/>	
<input type="checkbox"/> Enable Pre-Authentication		
<b>Authentication RADIUS Server:</b>	Port <input type="text" value="1812"/>	IP address <input type="text" value="192.168.1.46"/> Password <input type="text"/>
	<input type="text" value="*****"/>	

*Note: When encryption WEP is selected, you must set WEP key value.*

- **Encryption:** Select **WPA**, **WPA2** or **WPA2 Mixed** from the drop-down list if your wireless network uses this encryption. WPA (Wi-Fi Protected Access) was designed to improve upon the security features of WEP (Wired Equivalent Privacy). The technology is designed to work with existing Wi-Fi products that have been enabled with WEP. WPA provides improved data encryption through the Temporal Integrity Protocol (TKIP), which scrambles the keys using a hashing algorithm and by adding an integrity checking feature which makes sure that keys haven't been tampered with.
- **WPA Authentication Mode:** Select the **Enterprise (RADIUS)** radio button.
- **WPA/WPA2:** Select **TKIP**, **AES** or both as the cipher suite.
- **RADIUS Port:** Enter the port number of the RADIUS server. The default is usually 1812.
- **RADIUS IP Address:** Enter the IP address of the RADIUS server.
- **RADIUS Password:** Enter the shared password of the RADIUS server.
- Click on the **Apply Changes** button to confirm the changes. This device will automatically restart once these changes have been applied.



### 3.10.4 Access Control

- Click on the **Access Control** link under the **Wireless** menu. On this page you can filter the MAC address by allowing or blocking access the network.

#### Wireless Access Control

If you choose 'Allowed Listed', only those clients whose wireless MAC addresses are in the Access Point. When 'Deny Listed' is selected, these wireless clients on the list will not be abl

**Wireless Access Control Mode:**  

**MAC Address:**

**Current Access Control List:**

MAC Address	Comment	Select

- Wireless Access Control Mode:** You may choose to **Disable**, **Allow Listed**, or **Deny Listed** MAC address from associating with the network. By selecting Allow Listed, only the address listed in the table will have access to the network; all other clients will be blocked. On the other hand, selected Deny Listed, only the listed MAC address will be blocked from access the network; all other clients will have access to the network.
- MAC Address:** Enter the MAC address.
- Current Access Control list:** This table lists the blocked or allowed MAC addresses; you may delete selected MAC address or delete all the addresses from the table by clicking on the associated buttons.
- Click on the **Apply Changes** button to confirm the changes. This device will automatically restart once these changes have been applied.

### 3.10.5 WDS

- Click on the **WDS** link under the **Wireless** menu. On this page you can configure the WDS (Wireless Distribution System) which allows the Access Point to function as a repeater.

#### WDS Settings

Wireless Distribution System uses wireless media to communicate with other APs, like the E the same channel and set MAC address of other APs which you want to communicate with :

**Enable WDS**

**Add WDS AP:** **MAC Address**  **Comment**

**Current WDS AP List:**

MAC Address	Comment	Select
11:22:33:44:55:66	ap1	<input type="checkbox"/>
22:33:44:55:66:77	ap2	<input type="checkbox"/>

- Enable WDS:** Place a check in this box to enable this feature.
- Add WDS AP:** Enter the MAC address of the Access Point that will join the WDS network along with a comment about the AP.
- Current WDS AP list:** This table lists MAC addresses; you may delete selected MAC address or delete all the addresses from the table by clicking on the associated buttons.
- Click on the **Apply Changes** button to confirm the changes. This device will automatically restart once these changes have been applied.
- Click on the **Set Security** button to configure the security settings.

## WDS Security Setup

This page allows you setup the wireless security for WDS. When enabled, you must make sure each WDS device has adopted the same encryption algorithm and Key.

**Encryption:**    
**WEP Key Format:**    
**WEP Key:**   
**Pre-Shared Key Format:**    
**Pre-Shared Key:**

- **Encryption:** Select **WEP** 64bits, WEP 128bits, WPA (TKIP) or WPA2 (AES) from the drop-down list if your wireless network uses a specific encryption.
- **Key Format:** Select a key format from the drop-down list. 64bit-hex keys require 10 characters, where as 128-bit keys require 26 characters. A hex key is defined as a number between 0 through 9 and letter between A through F.
- **Key Length:** Select a **64-bit** or **128-bit** from the drop-down list.
- **Pre-Shared Key Format:** Select **Passphrase** from the drop-down list.
- **Pre-Shared Key:** Enter the pass phrase; this should be between 8 and 63 characters.
- Click on the **Apply Changes** button to confirm the changes. This device will automatically restart once these changes have been applied.

# Appendix A – Specifications

## Data Rates

1, 2, 5.5, 6, 9, 11, 12, 18, 24, 36, 48, 54 Mbps

## Standards

IEEE802.11b/g, IEEE802.1x, IEEE802.3, IEEE802.3u

## Compatibility

IEEE 802.11g/ IEEE 802.11b

## Power Requirements

Power Supply: 90 to 240 VDC  $\pm$  10%  
(depends on different countries)  
Device: 12 V/ 1A

## Status LEDs

LAN: Link, WLAN: Link, Power: on/off

## Regulation Certifications

FCC Part 15/UL, ETSI 300/328/CE

## RF Information

### Frequency Band

2.400~2.4835 GHz (US, EU)  
2.400~2.484 GHz (JP)

### Media Access Protocol

Carrier Sense Multiple Access with Collision Avoidance (CSMA/CA)

### Modulation Technology

Orthogonal Frequency Division Multiplexing (OFDM)  
DBPSK @ 1Mbps  
DQPSK @ 2Mbps  
CCK @ 5.5 & 11Mbps  
BPSK @ 6 and 9 Mbps  
QPSK @ 12 and 18 Mbps  
16-QAM @ 24 and 36 Mbps  
64-QAM @ 48 and 54 Mbps

### Operating Channels

11 for North America, 14 for Japan, 13 for Europe,

### Receive Sensitivity (Typical)

#### 802.11g:

-88dBm @ 6Mbps  
-70dBm @ 54Mbps

#### 802.11b:

-92 dBm @ 1Mbps  
-85 dBm @ 11Mbps

### Available Transmit Power (Max.)

26dBm @ 1~24Mbps  
23dBm @ 36Mbps  
21dBm @ 48Mbps  
20dBm @ 54Mbps

### RF Connector

TNC Type (Female Reverse)

### Networking

#### Topology

Ad-Hoc, Infrastructure

#### Operation Mode

Point-to-Point/ Point-to-Multipoint Bridge/  
Client Router/ AP/ WDS/ Repeater

### Interface

One 10/100Mbps RJ-45 LAN Port

### Security

- ◆ IEEE802.1x Authenticator / RADIUS Client (EAP-MD5/TLS/TTLS) Support in AP Mode
- ◆ WPA /WPA2
- ◆ MAC address filtering
- ◆ Hide SSID in beacons
- ◆ User isolation
- ◆ NAT in CR mode

### IP Auto-configuration

DHCP client/server

### Management

#### Configuration

- ◆ Web-based configuration (HTTP)
- ◆ SNMP V1, V2c
- ◆ Telnet

#### Firmware Upgrade

Upgrade firmware via web-browser

### Environmental

#### Temperature Range

Operating: 0°C to 45°C (32°F to 113°F)  
Storage: -20°C to 70°C (-4°F to 158°F)

#### Humidity (non-condensing)

5%~95% Typical

---

## Appendix B – FCC Interference Statement

---

### Federal Communication Commission Interference Statement

This equipment has been tested and found to comply with the limits for a Class B digital device, pursuant to Part 15 of the FCC Rules. These limits are designed to provide reasonable protection against harmful interference in a residential installation. This equipment generates uses and can radiate radio frequency energy and, if not installed and used in accordance with the instructions, may cause harmful interference to radio communications. However, there is no guarantee that interference will not occur in a particular installation. If this equipment does cause harmful interference to radio or television reception, which can be determined by turning the equipment off and on, the user is encouraged to try to correct the interference by one of the following measures:

- Reorient or relocate the receiving antenna.
- Increase the separation between the equipment and receiver.
- Connect the equipment into an outlet on a circuit different from that to which the receiver is connected.
- Consult the dealer or an experienced radio/TV technician for help.

FCC Caution: Any changes or modifications not expressly approved by the party responsible for compliance could void the user's authority to operate this equipment.

This device complies with Part 15 of the FCC Rules. Operation is subject to the following two conditions: (1) This device may not cause harmful interference, and (2) this device must accept any interference received, including interference that may cause undesired operation.

### **IMPORTANT NOTE:**

#### **FCC Radiation Exposure Statement:**

This equipment complies with FCC radiation exposure limits set forth for an uncontrolled environment.

This device complies with FCC RF Exposure limits set forth for an uncontrolled environment, under 47 CFR 2.1093 paragraph (d)(2).

This transmitter must not be co-located or operating in conjunction with any other antenna or transmitter.

---

## Appendix C – IC Statement

---

### IC statement

Operation is subject to the following two conditions:

This device may not cause interference and

This device must accept any interference, including interference that may cause undesired operation of the device.

This device has been designed to operate with an antenna having a maximum gain of 9 dBi. Antenna having a higher gain is strictly prohibited per regulations of Industry Canada. The required antenna impedance is 50 ohms.

### IMPORTANT NOTE:

#### IC Radiation Exposure Statement:

This equipment complies with IC radiation exposure limits set forth for an uncontrolled environment. End users must follow the specific operating instructions for satisfying RF exposure compliance. This equipment should be installed and operated with minimum distance 20cm between the radiator & your body.

This transmitter must not be co-located or operating in conjunction with any other antenna or transmitter.

### Règlement d'Industry Canada

Les conditions de fonctionnement sont sujettes à deux conditions:

Ce périphérique ne doit pas causer d'interférence et.

Ce périphérique doit accepter toute interférence, y compris les interférences pouvant perturber le bon fonctionnement de ce périphérique.